

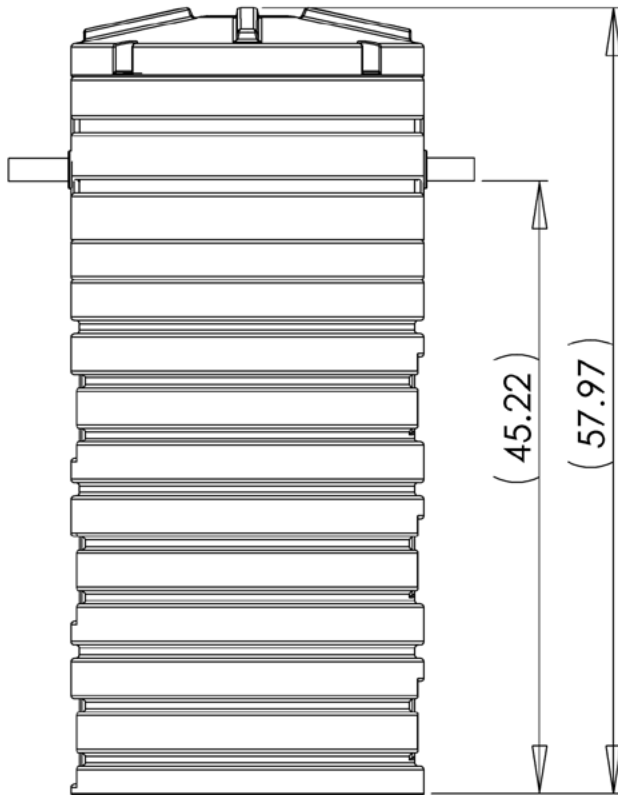
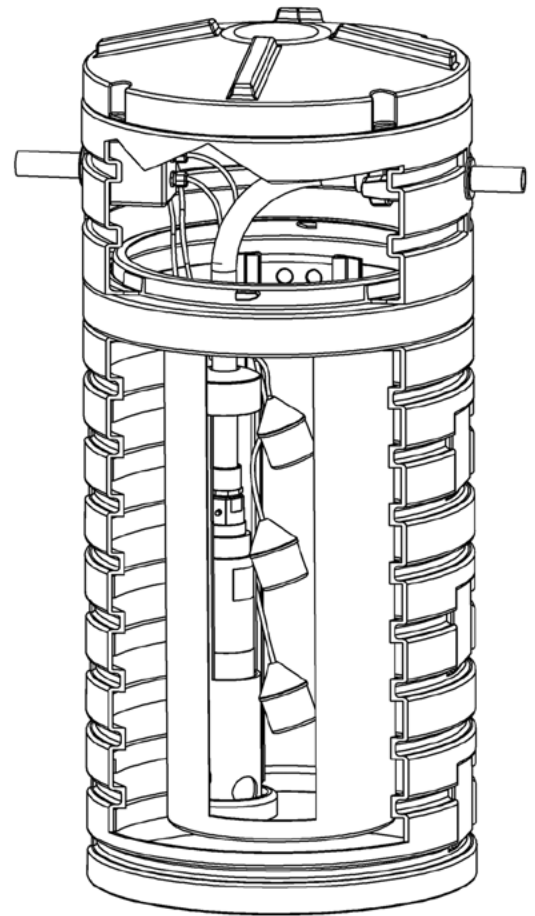


## STEP Systems STEP Packages

### ZS-410

#### Features

- Ideal for repairs and sites with limited space
- Includes a 10, 20 or 30 gpm turbine effluent pump
- Designed for higher performance onsite systems where high heads are required
- Includes an interlocking filtered vault to protect pump and field from solids
- Includes all components required to install a pump outside a tank



#### Components

**RB-B-26x38:** 26" x 38" Basin

**RB-R-26x12:** 26" x 12" Riser

**RB-L-26:** 26" Lid

**FPV-I36-4:** 36" Interlocking Filtered Pump Vault with 2 Filter Plates

**P-TE-10/20/30:** 1/2 hp, 10, 20 or 30 gpm Turbine Effluent Pump

**PDS-TD-1.25:** 1.25" Turbine Discharge

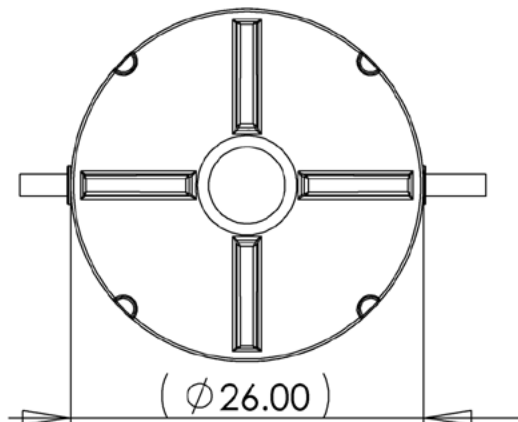
**PDS-GT-1.25:** 1.25" Rubber Grommet

**PDS-GT-4.0:** 4" Rubber Grommet

**AC-JSB:** Junction Splice Box with 4 Cord Grips

**AC-CP-S-C:** Simplex Contactor Control Panel

**PDS-GT-1.50:** 1.50" Rubber Grommet



#### Warranty for Defects in Material and Workmanship

- Pump - 3 Years
- Alarms/Controls - 3 Years
- Risers and Lids - 2 Years
- Filtered Vault - 10 Years
- All other components - 2 Years

**Quanics**  
Engineering Water Solutions™

P.O. Box 1520, Crestwood, Ky, 40014

Copyright 2006, Quanics Incorporated, All rights reserved  
Product(s) covered by one or more U.S. and/or international patents. Other U.S. and international patents may be pending.